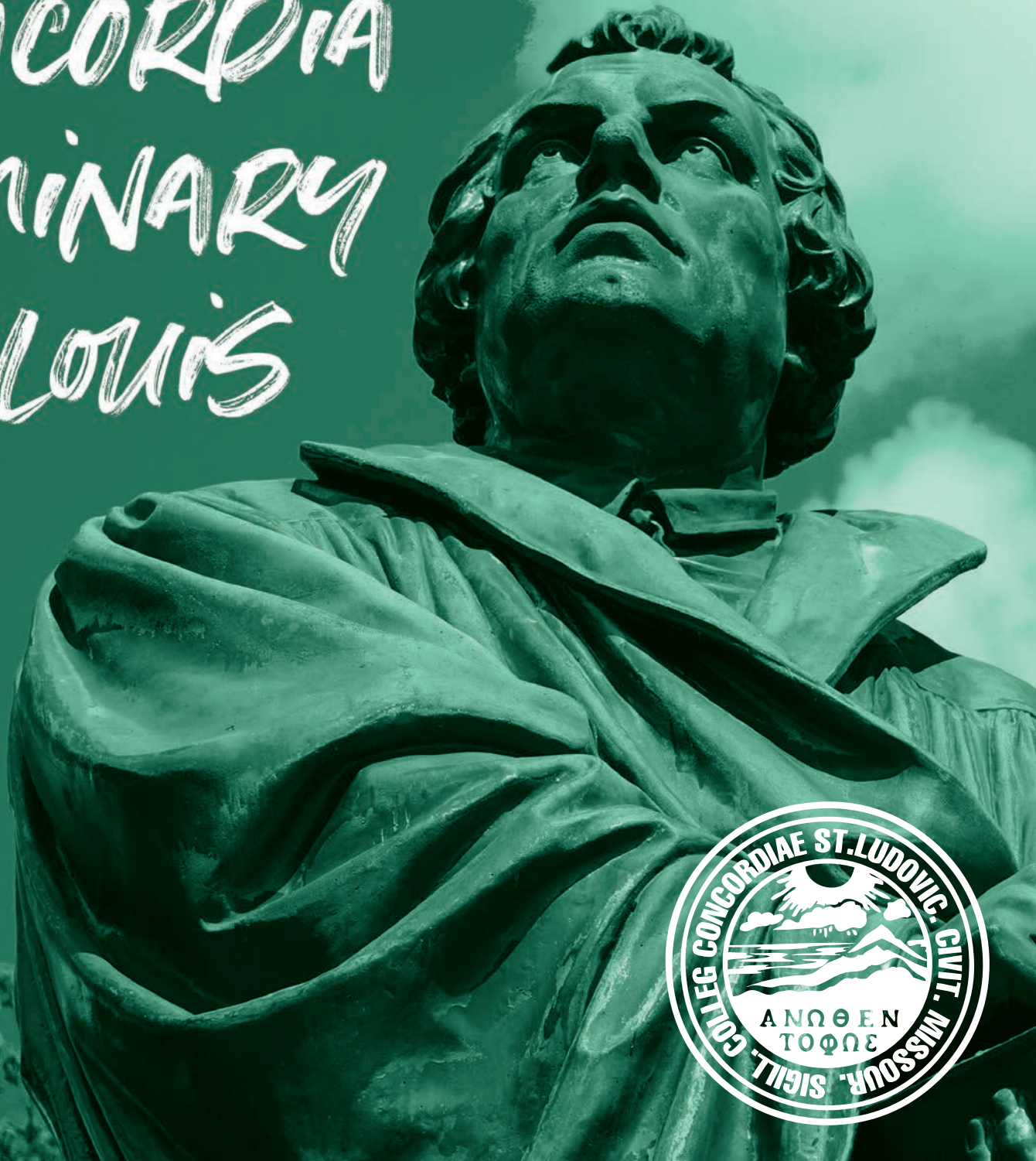


CONCORDIA
SEMINARY
ST. LOUIS







THIS IS CONCORDIA SEMINARY

CHRIST CENTERED
BIBLICALLY SOUND
MISSION FOCUSED



DEAR PROSPECTIVE *Students*

Greetings from the beautiful campus of Concordia Seminary, St. Louis!

Is there any more meaningful and rewarding way to spend one's life than bringing the Good News of Jesus Christ to others? The call to ministry in the 21st century may not be highly honored in the eyes of the world. But the sharing of Jesus' love, forgiveness, saving work and eternal promises is desperately needed! It brings rejoicing among the angels of heaven, and it is precious to our God. It is a challenging and beautiful calling. As Isaiah writes: "How beautiful upon the mountains are the feet of him who brings good news" (Isaiah 52:7 ESV). And Daniel, too, says it well: "Those who are wise shall shine like the brightness of the sky above; and those who turn many to righteousness, like the stars forever and ever" (Daniel 12:3 ESV).

We at Concordia Seminary are here to support you as you prepare for your future vocation or to deepen your theological learning to enrich your current ministry. As one of two seminaries of The Lutheran Church—Missouri Synod (LCMS), our ministerial formation programs are designed for those interested in becoming a pastor or deaconess in the LCMS. We also offer Advanced Studies programs to equip scholars and leaders with specialized training to support the church's mission. Concordia Seminary carries out this work with an unwavering commitment to the truth of the Holy Scriptures and to Christ-centered Lutheran theology and practice.

This guide will give you a brief overview of our programs and what it would be like to be a seminarian — studying with our renowned faculty and immersed in our Christian community. As you prayerfully consider your future path, please know that our admissions team is ready to talk with you and answer any questions you may have.

The Lord grant you peace and wisdom as you pursue your next steps. "And I heard the voice of the Lord saying, 'Whom shall I send, and who will go for us?' Then I said, 'Here am I! Send me!'" (Isaiah 6:8 ESV).

Every blessing in Christ,

Rev. Thomas J. Egger, Ph.D.
President
Concordia Seminary, St. Louis



EQUIPPING LEADERS TODAY FOR MINISTRY *TOMORROW*

What does ministry in the 21st century look like? Increasingly diverse with worldviews and religions, today's postmodern world is vastly different from just a generation ago, leaving many to doubt if there is such a thing as absolute truth.

That's why Concordia Seminary, St. Louis exists — to prepare the next generation of church leaders who will engage those in our ever-changing culture with the timeless truth of God's Word.

Whether learning in the classroom, during field education experiences, vicarage assignments or deaconess internships, our students receive whole-person training that produces pastors, deaconesses and ministry leaders who can flourish for a lifetime of service.

Does your future include enrolling at Concordia Seminary? Whether you have just begun to explore this possibility or you have considered attending the Seminary for a long time, we're ready to talk with you.



ONWARD AND *UPWARD*

EXCELLENCE IN ALL ENDEAVORS

Concordia Seminary exists to prepare the next generation of church leaders. We are here to support you as you prepare for your future vocation — contributing to the church and Christ's mission to the world. We do this with a deep commitment to Scripture, the Lutheran confessions and practice in the spirit of servant leadership.

15:1

student to
faculty ratio

13,000

GRADUATES SENT
INTO THE HARVEST
FIELDS

33
faculty



12 ENDOWED
CHAIRS

600+

STUDENTS

220+

RESIDENTIAL
MINISTERIAL
FORMATION
STUDENTS

170+

DISTANCE
MINISTERIAL
FORMATION
STUDENTS

200+

ADVANCED
STUDIES
STUDENTS



100%

PLACEMENT
OF ALL
MINISTERIAL
FORMATION
CANDIDATES



5 DEGREE
PROGRAMS



7 CERTIFICATE
PROGRAMS

1839

year founded

- Since 1839, Concordia Seminary has equipped people
- for a lifetime of ministry. Today, the Seminary offers
- degrees that prepare pastors and deaconesses, and
- advanced degrees for clergy and laity. Residential and
- distance studies are readily available — making ministry
- studies more accessible than ever before.



MINISTERIAL FORMATION

PASTORAL FORMATION

RESIDENTIAL PROGRAMS

The **Master of Divinity (M.Div.) Program** equips men for the Holy Ministry of Word and Sacrament in the LCMS. It is the standard route to a master's degree and certification for ordained ministry in congregations and other ministry settings. It includes instruction in Greek and Hebrew in order to read the Bible in its original languages.

M.Div. Program	For LCMS men
	Traditional route to become an LCMS pastor
	Residential program with one-year vicarage
	Typically completed in four years
	98 credit hours
	Requires Greek and Hebrew
	Result: M.Div. + Pastoral Certificate for ordained ministry



PJ AARSVOLD
M.Div. Student

"I realized that God had given me many tools, experiences and resources that could be used to His glory as a pastor. I felt pretty sure that this was a route that God had opened to me, so I started exploring what this journey would look like. Concordia Seminary immediately jumped out to me as a place centered fully on Jesus. I knew I wanted to study here."

The **Residential Alternate Route (RAR) Program** is a certificate program that closely parallels the M.Div. Program. Students in this program have significant experience in congregations and seek to further their spiritual, academic and personal development to be equipped for Word and Sacrament ministry in the LCMS.

RAR Program

- For LCMS men 35 and over
- Alternate route to become an LCMS pastor
- Residential program with one-year vicarage
- Typically completed in three years
- 77 credit hours
- Requires Greek and ministry experience
- Result: Pastoral Certificate for ordained ministry



\$ TUITION COST TO YOU = \$0

M.Div. and RAR students pay no tuition thanks to the generosity and support of Seminary donors, LCMS districts and congregations. To be eligible for guaranteed tuition, students work closely with Financial Aid and agree to a financial aid partnership covenant. While tuition cost is covered, there are additional costs for attending the Seminary. Learn more at csl.edu/financialaid.



MINISTERIAL FORMATION

PASTORAL FORMATION

DISTANCE PROGRAMS

The **Specific Ministry Pastor (SMP) Program** is a four-year distance education certificate program in which men receive Seminary academic training for ordination while living and learning in the same ministry setting in which they will serve as pastors. Local pastor-mentors work with SMP students to provide day-to-day guidance, encouragement and prayer.

\$ TUITION AND FINANCIAL AID

SMP students are responsible for 100% of their tuition. However, education costs may be shared with the student's calling (sending) congregation and LCMS district. Learn more at csl.edu/financialaid.



SMP Program	Men looking to serve their existing congregation
	Distance program with concurrent vicarage
	32 credits
	Typically completed in four years
	Result: Pastoral Certificate (Graduates remain in service to their existing congregation)

CSL.EDU/SMP

ADMIT@CSL.EDU

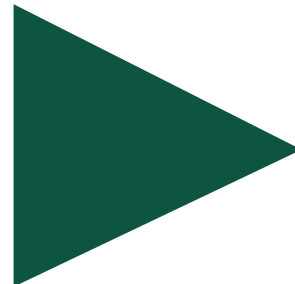


CHAD BRESSON
SMP Student

“The first two [SMP] classes have already made me a better vicar, a better pastor, a better church planter because I now am armed and equipped to understand where I’m coming from and where The Lutheran Church—Missouri Synod is coming from. ... I’m learning all the things that I wish I knew at 22 instead of 55 ... I’m like a little kid in a candy store. I’m learning all these really good, deep [theological concepts] and understanding Word and Sacrament, things that I was grasping at in my former context. ... I couldn’t be happier.”

The **SMP to General Pastor Certification (GPC) Program** is a distance education program for SMP pastors. Those who complete this program are eligible to have their roster status changed to “Minister of Religion-Ordained (General Pastor)” and may receive a call from congregations nationwide.

SMP to GPC Program	For SMP pastors
	Distance program
	56 credit hours
	Requires Greek
	Result: Pastoral Certificate (Graduates may be called to other ministry locations)



\$ TUITION AND FINANCIAL AID

SMP to GPC students receive a standard grant of 50% of tuition. While half of the tuition cost is covered, there are additional costs for attending the Seminary. Learn more at [csl.edu/financialaid](https://www.csl.edu/financialaid).

CSL.EDU/GPC



MINISTERIAL FORMATION

PASTORAL FORMATION

DISTANCE PROGRAMS

The **Center for Hispanic Studies (CHS)** is a four-year distance certificate program offering theological education for U.S. Hispanic/Latino communities. Students who complete the 18-course curriculum are eligible to become rostered pastors in the LCMS. Eligible students may apply to the Master of Arts (M.A.) Program (taught in Spanish).

The **Ethnic Immigrant Institute of Theology (EIIT)** is a four-year distance certificate program of theological education for effective pastoral or diaconal leaders within immigrant-based LCMS churches. Participants have the approval and support of their home church and the LCMS district within which they are carrying out their work.

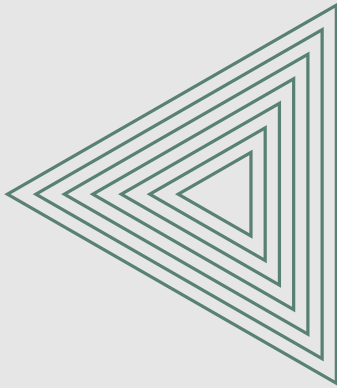
CHS Program	For LCMS men in Hispanic/Latino communities
	Distance program with concurrent vicarage
	Typically completed in four years
	18 courses
	Result: Pastoral Certificate

EIIT Program	For LCMS men in immigrant-based churches
	Distance program with concurrent vicarage
	Typically completed in four years
	24 courses
	Result: Pastoral Certificate

JAIMÉ GONZALEZ
CHS Student



“I’m coming from a nondenominational and Catholic background. What brought me here was a need to have a better understanding of Lutheran Christian doctrine.”



\$ TUITION AND FINANCIAL AID

Tuition for CHS and EIIT students is typically covered with the student’s LCMS district, congregation and/or mission providing 2/3 of the cost and Concordia Seminary providing 1/3. Concordia Seminary’s portion of financial aid is possible because of the generosity and support of Seminary donors. Learn more at csl.edu/financialaid.

“Being a pastor here in the United States is different from being a pastor in South Sudan where I’m from. So for me, training here at Concordia Seminary is significant in my ministry. ... It will equip me so that I can deliver the Word of God. ... This is a joyous moment for me to be here and to be trained.”



ISAAC LUJANG
EIIT Student



MINISTERIAL FORMATION

DEACONESS FORMATION

Our **Deaconess Studies Program** is designed for LCMS women who seek to further their knowledge of theology and its applications while serving congregations or institutions of the LCMS as a deaconess. Five paths of study leading to certification as a “Minister of Religion-Commissioned, Deaconess” in the LCMS are offered, including two residential degree programs and three distance certification programs.

RESIDENTIAL PROGRAMS

The **Master of Arts (M.A.), Spiritual Care Major with Deaconess Certification Program** equips women to share the Gospel of Jesus Christ through spiritual care, works of mercy and teaching the Christian faith. Graduates may be called to serve congregations, schools, social service organizations or foreign missions.

The **Master of Arts (M.A.), Spiritual Care Major with Deaconess Certification + Master of Social Work (M.S.W.) Program** provides students with an M.A. from Concordia Seminary and an M.S.W. with a clinical concentration from Saint Louis University. Students gain knowledge and skills in blending Lutheran theology and practice with the profession of social work especially through ministries and service organizations recognized by the LCMS.



SARAH RUSCHE

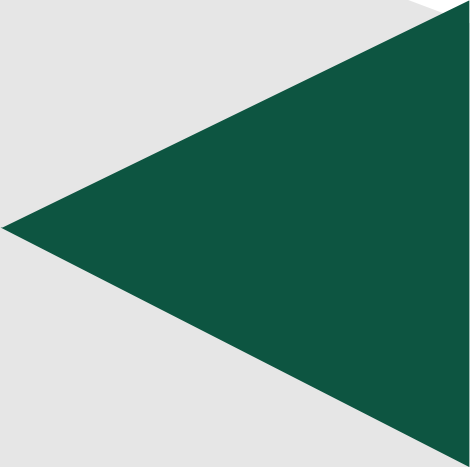
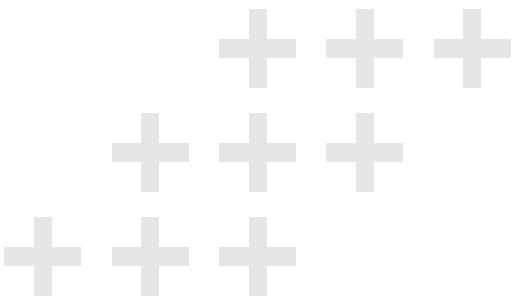
*M.A. with Deaconess
Certification Student*

“I already feel such an amazing community here ... Having the Lutheran foundation to everything gives it a different approach than just a liberal arts college. Being able to study theology with other people who believe the same thing as me and getting to know those people as well as to have those connections later on is what I’m looking forward to.”

CSL.EDU/DEAC

M.A. with Deaconess Certification	For LCMS women
	Residential program with one-year internship
	Typically completed in three years
	54 credit hours
	Result: M.A., Spiritual Care Major with Deaconess Certification

M.A. with Deaconess Certification + M.S.W.	For LCMS women
	Residential program with one-year internship
	Typically completed in four years
	78 credits hours + 12 for Deaconess Certification
	Result: M.A., Spiritual Care Major with Deaconess Certification + M.S.W.



\$ TUITION COST TO YOU = \$0

Residential Deaconess Studies students pay no tuition thanks to the generosity and support of Seminary donors, LCMS districts and congregations. To be eligible for guaranteed tuition, students work closely with Financial Aid and agree to a financial aid partnership covenant. While tuition cost is covered, there are additional costs for attending the Seminary. Dual-degree students benefit from the guaranteed tuition financial aid program at Concordia Seminary, but do pay tuition at Saint Louis University (SLU). Some financial aid is available from SLU for dual-degree students. Learn more at csl.edu/financialaid.

CSL.EDU/DEACMSW



MINISTERIAL FORMATION

DEACONESS FORMATION

DISTANCE PROGRAMS

The **Online Deaconess Studies Program (ODS)** is a four-year distance education program that prepares women to share the Gospel through works of mercy, spiritual care and teaching the Christian faith, and leads to certification and eligibility for consecration and placement as a commissioned deaconess in the LCMS.

\$ TUITION AND FINANCIAL AID

ODS students receive a standard grant of 1/3 of tuition. There may be additional opportunities for some students to receive funding from their LCMS district, congregation or other sponsor. Concordia Seminary’s portion of financial aid is possible because of the generosity and support of Seminary donors. Learn more at csl.edu/financialaid.

ODS Program	For LCMS women
	Distance program with concurrent internship
	Typically completed in four years
	16 courses
	Result: Deaconess Certificate



FABIANA DOS SANTOS
CHS Deaconess Student

“I have been working in the Latino community here in the United States, and I have seen different situations that make me understand I need to learn more if I want to help people ... With the deaconess program, I can have more tools.”

CSL.EDU/ODS

The **Center for Hispanic Studies (CHS) Deaconess Program** is a four-year distance certificate program that prepares women from U.S. Hispanic/Latino communities to be approved, consecrated and rostered as deaconesses in the LCMS. Students are required to complete a concurrent internship as part of their deaconess formation.

CHS Deaconess Program	For LCMS women in Hispanic/Latino communities
	Distance program with concurrent internship
	Typically completed in four years
	18 courses
	Result: Deaconess Certificate

EIIT Deaconess Program	For LCMS women in immigrant-based churches
	Distance program with concurrent internship
	Typically completed in four years
	24 courses
	Result: Deaconess Certificate

The **Ethnic Immigrant Institute of Theology (EIIT) Deaconess Program** is a four-year distance certificate program for women in mission and ministry in first generation ethnic immigrant, non-English language dominant and other culture specific contexts in North America. The certificate program leads to commissioning as a deaconess in the LCMS. Students take online courses, and as part of their formation, work in a ministry setting under the supervision of a local pastoral mentor.



\$ TUITION AND FINANCIAL AID

Tuition for CHS and EIIT students is typically covered with the student's LCMS district, congregation and/or mission providing 2/3 of the cost and Concordia Seminary providing 1/3. Concordia Seminary's portion of financial aid is possible because of the generosity and support of Seminary donors. Learn more at [csl.edu/financialaid](https://www.csl.edu/financialaid).



ADVANCED STUDIES

GRADUATE THEOLOGICAL PROGRAMS

Our programs of advanced study prepare individuals for theological leadership in the church and world. These include our Master of Arts (M.A.), Master of Sacred Theology (S.T.M.), Doctor of Ministry (D.Min.) and Doctor of Philosophy (Ph.D.).

The **Master of Arts (M.A.) Program** provides a general competence in biblical and doctrinal theology. Students will declare both a major and a minor chosen from the fields of exegetical, historical, practical or systematic theology.

💰 M.A. students can receive a grant up to 75% of the cost of tuition. Learn more at [csl.edu/financialaid](https://www.csl.edu/financialaid).

The online **Doctor of Ministry (D.Min.) Program** equips men in parish ministry with a higher level of competence in the practice of pastoral ministry. The program promotes professional growth and vocational renewal.

💰 D.Min. students receive a grant for 50% of the cost of tuition. Learn more at [csl.edu/financialaid](https://www.csl.edu/financialaid).

CSL.EDU/MA

M.A. Program	For clergy and laity
	Residential program
	39 credit hours
	Five program majors
	Result: M.A.

D.Min Program	For men in parish ministry
	Online program
	30 credit hours
	Professional doctoral degree
	Result: D.Min.

CSL.EDU/DMIN

The **Master of Sacred Theology (S.T.M.) Program** provides a special competence in a field of theological learning and increased skills in effectively using the tools and results of theological research. This degree is appropriate for clergy members who hold an M.Div. and seek to advance their education.

💰 S.T.M. students can receive a grant up to 100% of the cost of tuition. Learn more at csl.edu/financialaid.

The **Doctor of Philosophy (Ph.D.) Program** prepares scholars to lead the church in both academic and nonacademic settings by developing and establishing their competency in a chosen field through classroom performance, private study and preparation, and the production of publishable written work that contributes to their field.

💰 Ph.D. students can receive a grant up to 100% of the cost of tuition. Learn more at csl.edu/financialaid.

S.T.M. and Ph.D. students have the option of residential courses or a reduced-residency option, which is a combination of online courses and on-campus intensives two times annually.

S.T.M. Program	For men in parish ministry
	Residential or reduced-residency program
	24 credit hours
	Exam or thesis options
	Result: S.T.M.

Ph.D. Program	For men and women of any denomination
	Residential or reduced-residency program
	36 credit hours
	Highest academic degree at Concordia Seminary
	Result: Ph.D.



JOSEPH ABUOR

M.A. Student

“I’m excited to become an exegete and an Old Testament scholar. I’m very thankful for Concordia Seminary, and I’m looking forward to becoming what God intended for me to be.”



CSL.EDU/STM

ADMIT@CSL.EDU

CSL.EDU/PHD

CONCORDIA SEMINARY, ST. LOUIS | 19

TUITION AND Financial Aid

Your Seminary education is an investment not only in yourself, but also in the future of The Lutheran Church—Missouri Synod. Because of this, many people and organizations contribute to a variety of funding options, which we can explore with you, based on your needs, eligibility and program of interest.

We encourage you to learn about the Seminary's financial aid for each program by visiting csl.edu/financialaid.

You also can check out our tuition calculator at csl.edu/tuition-and-fees.



Still have questions about the cost of attending Concordia Seminary? Our Financial Aid staff is ready to talk with you. Just contact us at 314-505-7202 or finaid@csl.edu.

YOUR EXPENSES

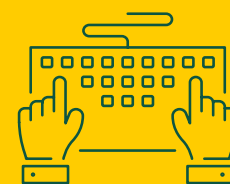
In addition to tuition, there are other costs for attending the Seminary. Types of the additional expenses to consider are listed below.

HOUSING & LIVING EXPENSES



For more information on housing options and fees, visit csl.edu/campus-housing.

BOOKS & SUPPLIES



TECHNOLOGY FEE

HEALTH INSURANCE

Student coverage only



BUDGET HELPS

While our generous financial aid packages offset tuition fees for most programs, there are additional costs for attending the Seminary. A number of budget helps are available to reduce out-of-pocket expenses especially for residential students:

The **Re-Sell It Shop** stocks household goods, clothing, toys, games and much more for students and their families at greatly reduced prices.

The **Food Bank** offers grocery and household staples at no charge to full-time residential students and their families.

Employment opportunities for full-time students include federal work-study and numerous other on-campus employment opportunities. We also collate and share local job postings suitable for students and their spouses.

Financial planning

Through a partnership with Concordia Plans, the church's worker benefits provider, all students (and their spouses if applicable) may meet with a financial educator on campus to discuss their financial well-being. The financial educator helps students with:

- Budgeting, goal setting and debt management
- Retirement planning
- Financial risk protection including insurance
- Clergy taxation





Our Faculty

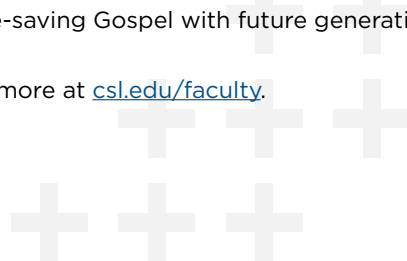
Our distinguished faculty members are known and respected throughout the church for their biblical and confessional scholarship and experience in applying the truth of God's Word to daily life.

Many students say the reason they come to Concordia Seminary is because of our outstanding faculty. Our professors are not only scholars and theologians, but also pastors who personally care for the future church leaders in their midst — whether in the classroom, during online discussions or chatting over coffee after morning chapel. Seminary faculty members bring a real-world knowledge to the classroom as they average more than 11 years of service each as pastors, missionaries or chaplains. As they combine theological expertise with experience in ministry, they seek to engage the most pressing issues affecting the broader culture and our world.

Their individual expertise and widely varied scholarship enriches the curriculum and includes such topics as biblical archaeology, Pauline theology, New Testament, Old Testament, Martin Luther and the Reformation, Christology, hermeneutics and biblical languages, missions, preaching, church history, creation, counseling, reconciliation, Muslim-Christian dialogue, film analysis, worship and on and on and on.

As a Concordia Seminary student, you'll be immersed in robust theological study with an esteemed Lutheran faculty, each committed to our Savior, to the church, to God's mission in the world and to the formation of church leaders who will share the life-saving Gospel with future generations.

Learn more at csl.edu/faculty.





OUR

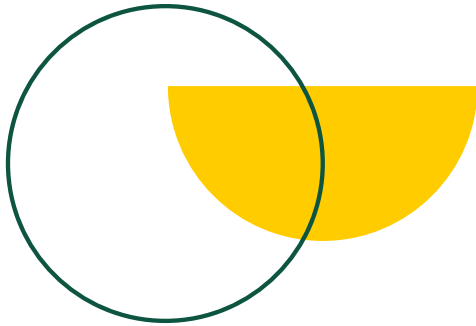
CAMPUS







CAMPUS Life



LIVE & LEARN

There are many opportunities for building community at Concordia Seminary, starting with where you live! Whether you're single or married, the Seminary has options for you, and plenty of ways to get to know others — whether it's enjoying fellowship during after-chapel coffee, grabbing lunch in the dining hall or participating in fun student-led events such as Springfest, Oktoberfest or the Green & Gold Follies. You'll treasure the time spent with new and old friends. Learn more at csl.edu/campuslife.

ON-CAMPUS LIVING

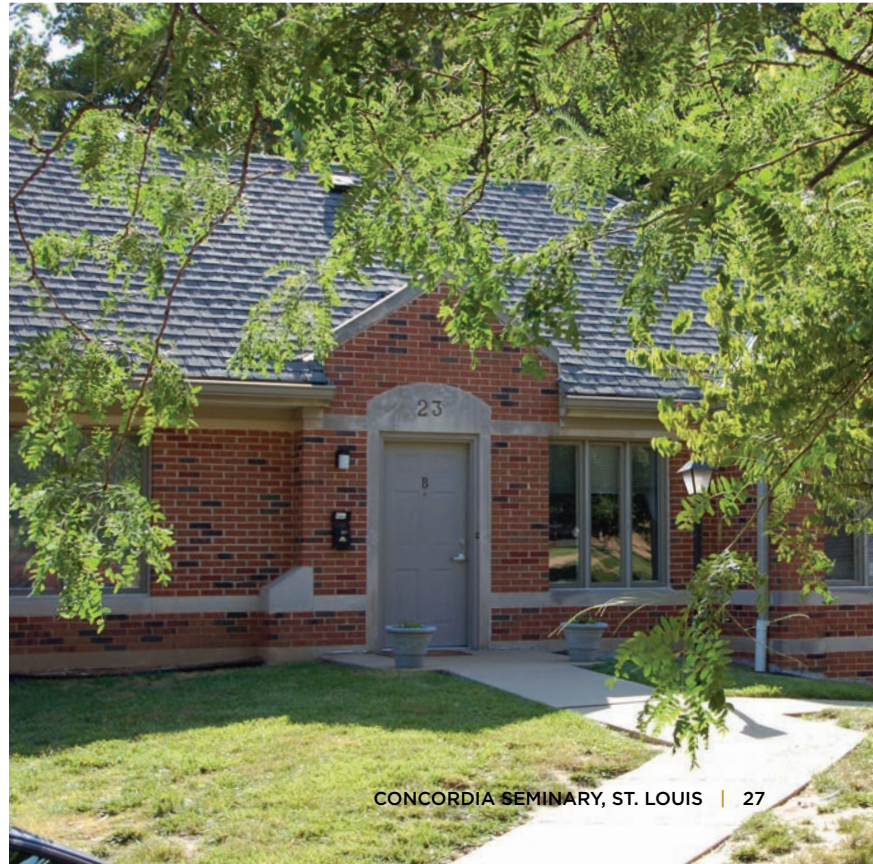
SINGLE STUDENTS

The Seminary provides residence hall rooms for single students. Choose from a double occupancy room, private room or private double room. Residence hall rooms are furnished with a desk, chair, bookshelf, chest of drawers, wardrobe or closet, and a bed with mattress. Laundry facilities are located conveniently in the residence halls.

MARRIED STUDENTS

Concordia Seminary has approximately 75 housing units for married students, which consist of 60 apartment units, 10 three-bedroom townhouses and five two-bedroom townhouses. The Founders Way Apartments are known by their nickname, "The Woods," which comes from the large number of trees located near the apartments that offer a park-like setting. The apartments create comfortable and convenient accommodations for a married couple, and many are large enough for families with several children.

Each apartment has a stove and refrigerator but is otherwise unfurnished. Each unit has a storage area in shared space with other residents. Rental rates are competitive with the local market.



CAMPUS Life

ON-CAMPUS LIVING

DINING SERVICES

A wide selection of fresh, healthy meals are available with the purchase of a meal plan. Meals are served in Wartburg Hall, with plenty of seating. Menus are designed with variety, convenience and nutrition in mind. Friendly, service-oriented staff aim to please and provide an excellent dining service experience.

KRISTINE KAY HASSE MEMORIAL LIBRARY

Concordia Seminary is home to one of the top theological libraries in the United States and the largest Lutheran library in North America. This essential component of rich academic life supports a robust environment of teaching, learning and theological research. In addition, our library houses more than 6,000 volumes in our rare book collection, including composer J.S. Bach's personal, annotated Bible.

CAMPUS STORE

The Campus Store is the place to get a snack, soda, coffee, ice cream, greeting cards, Seminary merch and much more — all in a convenient location at the center of campus. With café tables overlooking Chapel Plaza, the patio outside the Campus Store is a great place to have coffee, study or catch up with friends.



SPOUSES & FAMILIES

SEMINARY WOMEN'S ASSOCIATION

The Seminary Women's Association (SWA) offers Christian fellowship and service within the Seminary community and beyond. Events include a wine and cheese night, faculty Advent home tours, game nights, courses, craft events, a retreat and a formal ball in the spring. Service opportunities include outreach among the homeless and those in need.

CHILDREN

Concordia Seminary is a wonderful and welcoming place for children. Special events such as field day, Easter egg hunts and Springfest are especially child- and family-friendly. In addition, St. Louis has much to offer children of all ages. Within three miles of the Seminary, families can find seven playgrounds, Forest Park, the Saint Louis Zoo, museums and so much more.



CAMPUS Life

ORGANIZATIONS

STUDENT ASSOCIATION

Every full-time student at the Seminary is a member of the Student Association. Working through elected representatives, the association serves as the governing unit of the student body. It provides a framework that allows student initiative and energy to make the most constructive contribution possible for developing and sustaining the Seminary as a community of faith and learning. The Student Association hosts community activities such as Oktoberfest, Prof 'n Stein and Springfest.

LIFE TEAM

Centered in the Gospel of our Lord Jesus Christ, the Life Team equips the Seminary community and others to affirm life. This student-led, faculty-advised team equips the community for ministry in congregations and the world. Monthly meetings are held on campus for students to attend. Free dinner and free child care are often offered during gatherings.







CAMPUS Life

COMMUNITY WORSHIP

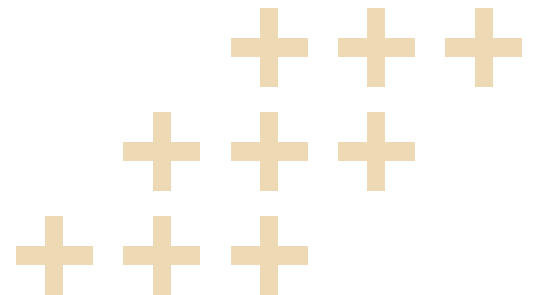
CHAPEL

At the heart and center of Concordia Seminary stands the Chapel of St. Timothy and St. Titus. It is here where students, faculty, staff and other members of the community hear of the Lord's promises and receive His gifts during daily chapel services, Monday through Friday. It is here where we come together, united as the body of Christ to receive His true body and blood. In this chapel, future pastors learn how to lead worship and the liturgy, preach, sing and pray.

The Chapel of St. Timothy and St. Titus is used for classes, private Confession and Absolution, personal devotions and choir rehearsals. All members of the Seminary community and the public are invited to join with us in the worship of Christ, our Savior.

MUSIC & ARTS

Concordia Seminary is host to a variety of musical and cultural activities throughout the year. Through worship services and concerts, our musicians and ensembles serve not only the Seminary community, but the greater St. Louis community, the global church and performance venues around the world.



CONCORDIA SEMINARY CONCERT SERIES

The annual Concordia Seminary Concert Series celebrates and proclaims our faith through the gift of music, featuring Seminary choirs and musicians, as well as visiting chorale groups and performers of the highest acclaim. All concerts are held in the Chapel of St. Timothy and St. Titus on the campus of Concordia Seminary with the exception of the carillon concerts, which are performed from Luther Tower for the enjoyment of those outdoors on the grounds surrounding the tower.

LAUDAMUS

Laudamus is a select choir of seminarians preparing for full-time service as pastors in the LCMS who share their gift of music during annual tours. The choir delights in proclaiming the Gospel of Jesus Christ through music.

CHAPEL MUSIC

Along with our Seminary concerts and choral activities, student musicians often accompany and enrich our daily chapel services, complementing the strong congregational singing that is a hallmark of Lutheran worship.



CAMPUS Life

SEMINARY WELLNESS

Concordia Seminary encourages students and their families, faculty and staff to make health and fitness a priority. The Seminary promotes exercise on a regular basis for holistic health maintenance and encourages participation in sports offerings for those who are interested.

FITNESS CENTER

The fitness center in Pederson Field House is available to the entire Seminary community to use for a voluntary program of daily exercise and health maintenance. The center includes a full complement of strength training and aerobic equipment and is staffed by seminarians trained in proper and safe usage as well as first aid and CPR.

INTERCOLLEGIATE SPORTS

Concordia Seminary sponsors intercollegiate teams in soccer, basketball, tennis, and golf — with all teams going by the name, the Preachers.

Our basketball team plays at Pederson Field House and participates in an annual tournament with our sister seminary, Concordia Theological Seminary, Fort Wayne, Ind. Our soccer team plays on the athletic fields on campus and competes annually against Kenrick-Glennon Seminary for the Nicea Cup.

INTRAMURAL PROGRAMS

Seminary students are encouraged to participate in our robust intramural sports program. From flag football to ultimate Frisbee, the intramural sports program allows students, faculty, staff and spouses to participate in a wide variety of activities. Intramurals are a great way to relax and unwind after a long day of classes and studying.





ST. LOUIS *Living*

Consistently ranked among the nation's most affordable and best places to live and raise families, the St. Louis region offers many opportunities to watch or participate in a wide range of sports, recreational activities and cultural events. The heritage of this river city shines through its many and various neighborhoods packed with history, dining, attractions and events. With numerous free and family-friendly fun activities, you can just pick a direction and go!

GATEWAY ARCH NATIONAL PARK

Take a 630-foot tram ride to the top of the arch and visit the Jefferson National Expansion Memorial to get a bird's eye view of where Lewis and Clark set out on their historic expedition! Visitors also can hop aboard a 19th century paddlewheel boat replica for a narrated cruise of the mighty Mississippi.

FOREST PARK

Once home to the 1904 World's Fair, Forest Park is the largest urban park in the United States, and is located just blocks from the Seminary. It offers amazing attractions and scenic walking and biking trails. Other points of interest include the Jewel Box (a beautiful greenhouse filled with magnificent floral displays), golf courses and the World's Fair Pavilion.

SAINT LOUIS SCIENCE CENTER

As one of the only free nonprofit science museums in the country, the Saint Louis Science Center encourages curiosity. You can test your knowledge of fossils and dinosaurs, clock the speed of cars on I-64 with a radar gun or experience what it's like to travel to outer space in the planetarium.

MISSOURI HISTORY MUSEUM

Whether it's the 1904 World's Fair, the Lewis and Clark expedition or Charles Lindbergh's flight across the Atlantic, the Missouri History Museum has it covered. The museum provides a look back at key events that shaped St. Louis through the centuries, with plenty of artifacts and exhibits to capture your interest.

SAINT LOUIS ZOO

One of the city's many free attractions, the Saint Louis Zoo housed at Forest Park has been recognized as one of the nation's leading zoological parks. Take a ride on the Emerson Zooline Railroad and get a guided tour of some of the most exciting animal exhibits in the park, or venture on your own through attractions like Big Cat Country, Penguin & Puffin Coast or the interactive stingray pool.



12,000
ANIMALS
at the Saint Louis Zoo

1,326
ACRES
in Forest Park



11,000
SEATS
in The Muny amphitheater

700
INTERACTIVE
EXPERIENCES
in the Saint Louis Science Center



\$0 ADMISSION
for zoo entry and most museums in Forest Park

ST. LOUIS LIVING

ST. LOUIS WHEEL

Located in downtown St. Louis, the St. Louis Wheel™ is a 200-foot high observation wheel with 42 fully enclosed, climate-controlled gondolas that seat up to six adults each. Wheel passengers can take three or four rotations high over the St. Louis skyline during the 15-minute ride.

ST. LOUIS AQUARIUM

The St. Louis Aquarium at Union Station in downtown St. Louis is a 120,000-square-foot aquarium that is filled with more than 13,000 animals and 44 exhibits! Visitors can explore aquatic life through amazing galleries and interactive exhibits including a 250,000-gallon shark habitat.

PROFESSIONAL SPORTS

Members of the St. Louis Blues notched their first national Hockey League Stanley cup championship in 2019! The Blues make their home at the Enterprise Center in downtown St. Louis, which also features a full range of concerts, ice shows and other events sure to entertain. The St. Louis Cardinals have 11 World Series championships and 23 National League Pennants. Join the best fans in baseball for a game at Busch Stadium, and be sure to check out the Hall of Fame Plaza and the Cardinals Hall of Fame and Museum.

LIVE ARTS

Visit the Fabulous Fox for dazzling live theater where you can catch the Broadway bug with a play, concert or dance troupe. Hear your favorite classical music performed by the renowned St. Louis Symphony Orchestra at Powell Hall or see an award-winning musical at Stages St. Louis. Enjoy an outdoor show at Forest Park's The Muny, the nation's largest outdoor amphitheater dedicated solely to musical theater.

PARK-LOVER'S PARADISE

Stay active all year 'round with 71 parks and cultural sites, six recreational complexes, more than 144 miles of trails — all on the nearly 13,000 acres of park land maintained by the St. Louis County Department of Parks and Recreation.



BECOME A STUDENT

Concordia Seminary exists to prepare the next generation of church leaders. We are here to support you as you prepare for your future vocation, to ultimately contribute to the church with a deep commitment to Lutheran theology and practice, and in the spirit of servant leadership.

Does your future include enrolling at Concordia Seminary? Whether you have just begun to explore this possibility or you have considered attending the Seminary for a long time, we're ready to talk with you.

Learn more at csl.edu/admissions or contact us at admit@csl.edu or 800-822-9545.



Concordia
Seminary
ST. LOUIS

801 SEMINARY PLACE, ST. LOUIS, MO 63105 | 314-505-7000 | CSL.EDU

